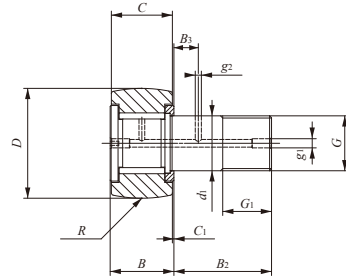
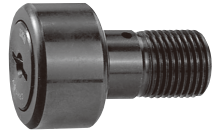
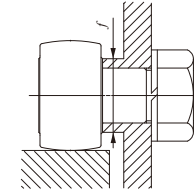
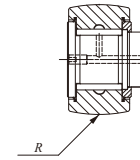


インチ系カムフォロア 総ころ・ドライバ溝付き



CRH...VR



CRH...VUUR

スタッド径6.350-50.800mm

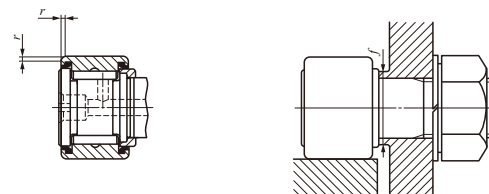
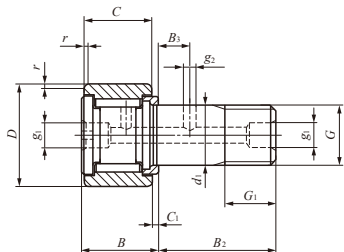
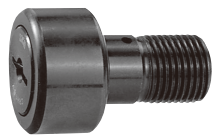
スタッド径 mm (inch)	呼び番号		質量 (参考) g	主要寸法 mm(inch)					
	シールド形 球面外輪	シールド形 球面外輪		D	C	d ₁	G UNF	G ₁	B max
6.350 (1/4)	CRH 8-1 VR	CRH 8-1 VUUR	12	12.700(1/2)	9.525(3/8)	6.350(1/4)	1/4-28	6.350(1/4)	11.1(0.44)
	CRH 9 VR	CRH 9 VUUR	15	14.288(5/8)	9.525(3/8)	6.350(1/4)	1/4-28	6.350(1/4)	11.1(0.44)
7.938 (5/16)	CRH 10-1 VR	CRH 10-1 VUUR	23	15.875(5/8)	11.112(7/16)	7.938(5/16)	5/16-24	7.938(5/16)	12.8(0.50)
	CRH 11 VR	CRH 11 VUUR	27	17.462(11/16)	11.112(7/16)	7.938(5/16)	5/16-24	7.938(5/16)	12.8(0.50)
11.112 (7/16)	CRH 12 VR	CRH 12 VUUR	39	19.050(3/4)	12.700(1/2)	11.112(7/16)	7/16-20	9.525(3/8)	14.6(0.57)
	CRH 14 VR	CRH 14 VUUR	49	22.225(7/8)	12.700(1/2)	11.112(7/16)	7/16-20	9.525(3/8)	14.6(0.57)
15.875 (5/8)	CRH 16 VR	CRH 16 VUUR	93	25.400(1)	15.875(5/8)	15.875(5/8)	5/8-18	12.700(1/2)	17.9(0.70)
	CRH 18 VR	CRH 18 VUUR	109	28.575(1 1/8)	15.875(5/8)	15.875(5/8)	5/8-18	12.700(1/2)	17.9(0.70)
19.050 (3/4)	CRH 20 VR	CRH 20 VUUR	176	31.750(1 1/4)	19.050(3/4)	19.050(3/4)	3/4-16	15.875(5/8)	21.0(0.83)
	CRH 22 VR	CRH 22 VUUR	200	34.925(1 3/8)	19.050(3/4)	19.050(3/4)	3/4-16	15.875(5/8)	21.0(0.83)
22.225 (7/8)	CRH 24 VR	CRH 24 VUUR	296	38.100(1 1/2)	22.225(7/8)	22.225(7/8)	7/8-14	19.050(3/4)	24.3(0.96)
	CRH 26 VR	CRH 26 VUUR	329	41.275(1 5/8)	22.225(7/8)	22.225(7/8)	7/8-14	19.050(3/4)	24.3(0.96)
25.400 (1)	CRH 28 VR	CRH 28 VUUR	463	44.450(1 3/4)	25.400(1)	25.400(1)	1 -14UNS	22.225(7/8)	27.4(1.08)
	CRH 30 VR	CRH 30 VUUR	508	47.625(1 7/8)	25.400(1)	25.400(1)	1 -14UNS	22.225(7/8)	27.4(1.08)
28.575 (1 1/8)	CRH 32 VR	CRH 32 VUUR	722	50.800(2)	31.750(1 1/4)	28.575(1 1/8)	1 1/8-12	25.400(1)	34.2(1.35)
	CRH 36 VR	CRH 36 VUUR	858	57.150(2 1/4)	31.750(1 1/4)	28.575(1 1/8)	1 1/8-12	25.400(1)	34.2(1.35)
31.750 (1 1/4)	CRH 40 VR	CRH 40 VUUR	1 260	63.500(2 1/2)	38.100(1 1/2)	31.750(1 1/4)	1 1/4-12	28.575(1 1/8)	40.0(1.57)
	CRH 44 VR	CRH 44 VUUR	1 460	69.850(2 3/4)	38.100(1 1/2)	31.750(1 1/4)	1 1/4-12	28.575(1 1/8)	40.0(1.57)
38.100 (1 1/2)	CRH 48 VR	CRH 48 VUUR	2 100	76.200(3)	44.450(1 3/4)	38.100(1 1/2)	1 1/2-12	31.750(1 1/4)	46.4(1.83)
	CRH 52 VR	CRH 52 VUUR	2 380	82.550(3 1/4)	44.450(1 3/4)	38.100(1 1/2)	1 1/2-12	31.750(1 1/4)	46.4(1.83)
44.450 (1 3/4)	CRH 56 VR	CRH 56 VUUR	3 240	88.900(3 1/2)	50.800(2)	44.450(1 3/4)	1 3/4-12UN	34.925(1 3/8)	52.8(2.08)
50.800 (2)	CRH 64 VR	CRH 64 VUUR	4 960	101.600(4)	57.150(2 1/4)	50.800(2)	2 -12UN	38.100(1 1/2)	59.4(2.34)

主要寸法 mm(inch)						取付関係 寸法 f 最小 mm(inch)	最大締付 トルク N・m	基本動 定格荷重 N	基本静 定格荷重 C ₀ N
B ₂	B ₃	C ₁	g ₁	g ₂	R				
15.875(5/8)	— (-)	0.794(1/2)	*3.175(1/8)	— (-)	180(7)	8.334(21/64)	3.4	4 710	5 410
15.875(5/8)	— (-)	0.794(1/2)	*3.175(1/8)	— (-)	180(7)	8.334(21/64)	3.4	4 710	5 410
19.050(3/4)	— (-)	0.794(1/2)	*3.175(1/8)	— (-)	200(8)	11.112(7/16)	6.8	6 340	8 530
19.050(3/4)	— (-)	0.794(1/2)	*3.175(1/8)	— (-)	200(8)	11.112(7/16)	6.8	6 340	8 530
22.225(7/8)	6.350(1/4)	0.794(1/2)	4.762(3/16)	2.381(3/32)	250(10)	13.494(11/32)	17.6	8 710	12 300
22.225(7/8)	6.350(1/4)	0.794(1/2)	4.762(3/16)	2.381(3/32)	250(10)	13.494(11/32)	17.6	8 710	12 300
25.400(1)	6.350(1/4)	1.588(1/16)	4.762(3/16)	2.381(3/32)	300(12)	18.256(29/32)	57.8	13 100	22 700
25.400(1)	6.350(1/4)	1.588(1/16)	4.762(3/16)	2.381(3/32)	300(12)	18.256(29/32)	57.8	13 100	22 700
31.750(1 1/4)	7.938(5/16)	1.588(1/16)	4.762(3/16)	2.381(3/32)	360(14)	24.209(61/64)	103	23 600	31 700
31.750(1 1/4)	7.938(5/16)	1.588(1/16)	4.762(3/16)	2.381(3/32)	360(14)	24.209(61/64)	103	23 600	31 700
38.100(1 1/2)	9.525(3/8)	1.588(1/16)	4.762(3/16)	2.381(3/32)	500(20)	26.988(11/16)	162	28 200	40 100
38.100(1 1/2)	9.525(3/8)	1.588(1/16)	4.762(3/16)	2.381(3/32)	500(20)	26.988(11/16)	162	28 200	40 100
44.450(1 3/4)	11.112(7/16)	1.588(1/16)	4.762(3/16)	2.381(3/32)	500(20)	32.941(119/64)	258	35 300	55 600
44.450(1 3/4)	11.112(7/16)	1.588(1/16)	4.762(3/16)	2.381(3/32)	500(20)	32.941(119/64)	258	35 300	55 600
50.800(2)	12.700(1/2)	1.588(1/16)	4.762(3/16)	3.175(1/8)	600(24)	37.306(113/32)	356	45 700	80 600
50.800(2)	12.700(1/2)	1.588(1/16)	4.762(3/16)	3.175(1/8)	600(24)	37.306(113/32)	356	45 700	80 600
57.150(2 1/4)	14.288(5/8)	1.588(1/16)	4.762(3/16)	3.175(1/8)	760(30)	40.878(129/64)	500	61 400	116 000
57.150(2 1/4)	14.288(5/8)	1.588(1/16)	4.762(3/16)	3.175(1/8)	760(30)	40.878(129/64)	500	61 400	116 000
63.500(2 1/2)	15.875(5/8)	1.588(1/16)	6.350(1/4)	3.175(1/8)	760(30)	51.991(231/64)	892	77 600	172 000
63.500(2 1/2)	15.875(5/8)	1.588(1/16)	6.350(1/4)	3.175(1/8)	760(30)	51.991(231/64)	892	77 600	172 000
69.850(2 3/4)	17.462(11/16)	1.588(1/16)	6.350(1/4)	3.175(1/8)	760(30)	59.928(235/64)	1 450	111 000	239 000
88.900(3 1/2)	19.050(3/4)	1.588(1/16)	6.350(1/4)	3.175(1/8)	760(30)	64.691(205/64)	2 190	142 000	317 000

備考1. スタッド径 d₁ が 7.938mm 以下 (*印) はスタッド頭部のみに油穴があります。その他は、スタッドの頭部、外径及び端面に油穴があります。
 2. グリースを封入しています。
 3. 最大静許容荷重については、IKO にお問い合わせください。

1N ≒ 0.102kgf

インチ系カムフォロア 総ころ・ドライバ溝付き



スタッド径6.350-50.800mm

CRH...V

スタッド径 mm (inch)	呼び番号		質量 (参考) g	主要寸法 mm(inch)					
	シールド形 円筒外輪	シールド形 円筒外輪		D	C	d ₁	G UNF	G ₁	B max
6.350 (1/4)	CRH 8-1 V	CRH 8-1 VUU	12	12.700(1/2)	9.525(3/8)	6.350(1/4)	1/4-28	6.350(1/4)	11.10(4.4)
	CRH 9 V	CRH 9 VUU	15	14.288(11/16)	9.525(3/8)	6.350(1/4)	1/4-28	6.350(1/4)	11.10(4.4)
7.938 (5/16)	CRH 10-1 V	CRH 10-1 VUU	23	15.875(5/8)	11.112(7/16)	7.938(5/16)	5/16-24	7.938(5/16)	12.8(0.50)
	CRH 11 V	CRH 11 VUU	27	17.462(13/16)	11.112(7/16)	7.938(5/16)	5/16-24	7.938(5/16)	12.8(0.50)
11.112 (7/16)	CRH 12 V	CRH 12 VUU	39	19.050(3/4)	12.700(1/2)	11.112(7/16)	7/16-20	9.525(3/8)	14.6(0.57)
	CRH 14 V	CRH 14 VUU	49	22.225(7/8)	12.700(1/2)	11.112(7/16)	7/16-20	9.525(3/8)	14.6(0.57)
15.875 (5/8)	CRH 16 V	CRH 16 VUU	93	25.400(1)	15.875(5/8)	15.875(5/8)	5/8-18	12.700(1/2)	17.9(0.70)
	CRH 18 V	CRH 18 VUU	109	28.575(1 1/8)	15.875(5/8)	15.875(5/8)	5/8-18	12.700(1/2)	17.9(0.70)
19.050 (3/4)	CRH 20 V	CRH 20 VUU	176	31.750(1 1/4)	19.050(3/4)	19.050(3/4)	3/4-16	15.875(5/8)	21.0(0.83)
	CRH 22 V	CRH 22 VUU	200	34.925(1 3/8)	19.050(3/4)	19.050(3/4)	3/4-16	15.875(5/8)	21.0(0.83)
22.225 (7/8)	CRH 24 V	CRH 24 VUU	296	38.100(1 1/2)	22.225(7/8)	22.225(7/8)	7/8-14	19.050(3/4)	24.3(0.96)
	CRH 26 V	CRH 26 VUU	329	41.275(1 5/8)	22.225(7/8)	22.225(7/8)	7/8-14	19.050(3/4)	24.3(0.96)
25.400 (1)	CRH 28 V	CRH 28 VUU	463	44.450(1 3/4)	25.400(1)	25.400(1)	1 -14UNS	22.225(7/8)	27.4(1.08)
	CRH 30 V	CRH 30 VUU	508	47.625(1 7/8)	25.400(1)	25.400(1)	1 -14UNS	22.225(7/8)	27.4(1.08)
28.575 (1 1/8)	CRH 32 V	CRH 32 VUU	722	50.800(2)	31.750(1 1/4)	28.575(1 1/8)	1 1/8-12	25.400(1)	34.2(1.35)
	CRH 36 V	CRH 36 VUU	858	57.150(2 1/4)	31.750(1 1/4)	28.575(1 1/8)	1 1/8-12	25.400(1)	34.2(1.35)
31.750 (1 1/4)	CRH 40 V	CRH 40 VUU	1 260	63.500(2 1/2)	38.100(1 1/2)	31.750(1 1/4)	1 1/4-12	28.575(1 1/8)	40.0(1.57)
	CRH 44 V	CRH 44 VUU	1 460	69.850(2 3/4)	38.100(1 1/2)	31.750(1 1/4)	1 1/4-12	28.575(1 1/8)	40.0(1.57)
38.100 (1 1/2)	CRH 48 V	CRH 48 VUU	2 100	76.200(3)	44.450(1 3/4)	38.100(1 1/2)	1 1/2-12	31.750(1 1/4)	46.4(1.83)
	CRH 52 V	CRH 52 VUU	2 380	82.550(3 1/4)	44.450(1 3/4)	38.100(1 1/2)	1 1/2-12	31.750(1 1/4)	46.4(1.83)
44.450 (1 3/4)	CRH 56 V	CRH 56 VUU	3 240	88.900(3 1/2)	50.800(2)	44.450(1 3/4)	1 3/4-12UN	34.925(1 3/8)	52.8(2.08)
50.800 (2)	CRH 64 V	CRH 64 VUU	4 960	101.600(4)	57.150(2 1/4)	50.800(2)	2 -12UN	38.100(1 1/2)	59.4(2.34)

CRH...VUU

主要寸法 mm(inch)						取付関係 寸法 f 最小 mm(inch)	最大締付 トルク N・m	基本動 定格荷重 N	基本静 定格荷重 N
B ₂	B ₃	C ₁	g ₁	g ₂	r				
15.875(5/8)	— (-)	0.794(1/2)	*3.175(1/8)	— (-)	0.397(1/16)	8.334(5/16)	3.4	4 710	5 410
15.875(5/8)	— (-)	0.794(1/2)	*3.175(1/8)	— (-)	0.397(1/16)	8.334(5/16)	3.4	4 710	5 410
19.050(3/4)	— (-)	0.794(1/2)	*3.175(1/8)	— (-)	0.397(1/16)	11.112(7/16)	6.8	6 340	8 530
19.050(3/4)	— (-)	0.794(1/2)	*3.175(1/8)	— (-)	0.397(1/16)	11.112(7/16)	6.8	6 340	8 530
22.225(7/8)	6.350(1/4)	0.794(1/2)	4.762(3/16)	2.381(3/32)	0.794(1/16)	13.494(1/2)	17.6	8 710	12 300
22.225(7/8)	6.350(1/4)	0.794(1/2)	4.762(3/16)	2.381(3/32)	0.794(1/16)	13.494(1/2)	17.6	8 710	12 300
25.400(1)	6.350(1/4)	1.588(1/16)	4.762(3/16)	2.381(3/32)	1.191(3/16)	18.256(3/2)	57.8	13 100	22 700
25.400(1)	6.350(1/4)	1.588(1/16)	4.762(3/16)	2.381(3/32)	1.588(1/16)	18.256(3/2)	57.8	13 100	22 700
31.750(1 1/4)	7.938(5/16)	1.588(1/16)	4.762(3/16)	2.381(3/32)	1.588(1/16)	24.209(6/16)	103	23 600	31 700
31.750(1 1/4)	7.938(5/16)	1.588(1/16)	4.762(3/16)	2.381(3/32)	1.588(1/16)	24.209(6/16)	103	23 600	31 700
38.100(1 1/2)	9.525(3/8)	1.588(1/16)	4.762(3/16)	2.381(3/32)	1.588(1/16)	26.988(1 1/16)	162	28 200	40 100
38.100(1 1/2)	9.525(3/8)	1.588(1/16)	4.762(3/16)	2.381(3/32)	1.588(1/16)	26.988(1 1/16)	162	28 200	40 100
44.450(1 3/4)	11.112(7/16)	1.588(1/16)	4.762(3/16)	2.381(3/32)	1.588(1/16)	32.941(1 1/4)	258	35 300	55 600
44.450(1 3/4)	11.112(7/16)	1.588(1/16)	4.762(3/16)	2.381(3/32)	1.588(1/16)	32.941(1 1/4)	258	35 300	55 600
50.800(2)	12.700(1/2)	1.588(1/16)	4.762(3/16)	3.175(1/8)	1.588(1/16)	37.306(1 1/2)	356	45 700	80 600
50.800(2)	12.700(1/2)	1.588(1/16)	4.762(3/16)	3.175(1/8)	1.588(1/16)	37.306(1 1/2)	356	45 700	80 600
57.150(2 1/4)	14.288(11/16)	1.588(1/16)	4.762(3/16)	3.175(1/8)	2.381(3/32)	40.878(1 5/8)	500	61 400	116 000
57.150(2 1/4)	14.288(11/16)	1.588(1/16)	4.762(3/16)	3.175(1/8)	2.381(3/32)	40.878(1 5/8)	500	61 400	116 000
63.500(2 1/2)	15.875(5/8)	1.588(1/16)	6.350(1/4)	3.175(1/8)	2.381(3/32)	51.991(2 3/16)	892	77 600	172 000
63.500(2 1/2)	15.875(5/8)	1.588(1/16)	6.350(1/4)	3.175(1/8)	2.381(3/32)	51.991(2 3/16)	892	77 600	172 000
69.850(2 3/4)	17.462(13/16)	1.588(1/16)	6.350(1/4)	3.175(1/8)	2.381(3/32)	59.928(2 3/16)	1 450	111 000	239 000
88.900(3 1/2)	19.050(3/4)	1.588(1/16)	6.350(1/4)	3.175(1/8)	2.381(3/32)	64.691(2 5/16)	2 190	142 000	317 000

備考1. スタッド径 d₁ が7.938mm以下(*印)はスタッド頭部のみに油穴があります。その他は、スタッドの頭部、外径及び端面に油穴があります。
 2. グリースを封入しています。
 3. 最大静許容荷重については、IKOにお問い合わせください。

1N≒0.102kgf

CF
CFS
NUCF
CR