



Innovation, Know-how & Originality

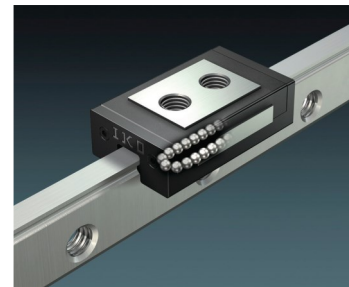
## IKO LWL MINIATURE LINEAR GUIDES CHOSEN TO PERFORM ON MARS

On February 18<sup>th</sup>, NASA’s latest generation Rover, Perseverance, landed on Mars after a seven month journey and IKO LWL miniature guides were along for the ride. Eight pieces of LWL are being used in the zoom and focus mechanism of the Mastcam-Z camera which serve as the “eyes” for Perseverance. Mastcam-Z (Z stands for “zoom”) are now producing impressive images, but in addition to sending back images for all of us to see, the cameras are also providing important data to help engineers navigate and scientists choose which rocks to study.

This isn’t the first trip to Mars for IKO. Our LWL guides were on the Curiosity Rover Mastcam when it launched back in 2012. Curiosity was able to send back amazing panoramic images using the Mastcam on board, which is similar to the new Mastcam-Z on Perseverance, just without the zoom feature.

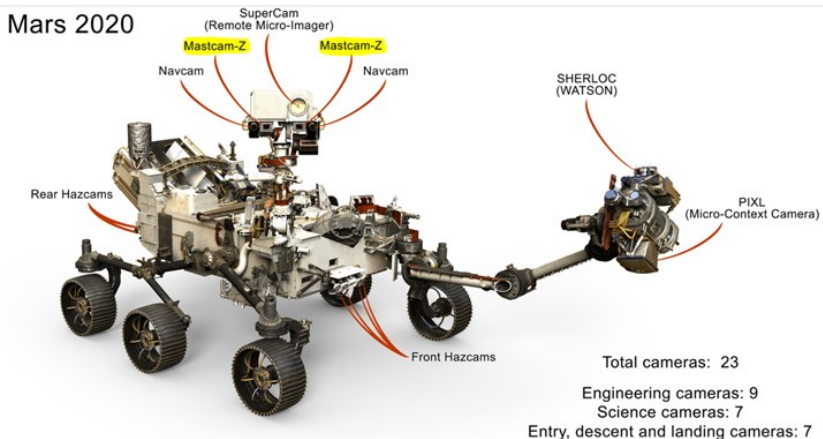
NASA’s Jet Propulsion Laboratory Team (JPL) trusted the reliability and durability of IKO LWL miniature guides to support these groundbreaking, important missions. LWL guides have specialized reliability features that allow them to operate for a Martian year or longer without human intervention in an environment as challenging as the Mars surface! Our success aboard the Curiosity no doubt led to our mission aboard Perseverance.

We are excited to watch and learn what Perseverance uncovers, and proud that IKO is part of the leading-edge discoveries that are bound to unfold.

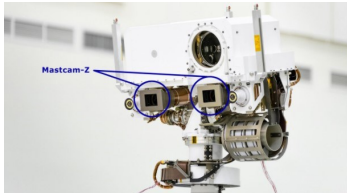


IKO LWL

## PERSEVERANCE ROVER



### CLOSE-UP OF MASTCAM-Z



NASA's Mars Perseverance rover acquired this image using its Left Mastcam-Z camera.

Follow Perseverance, visit <https://mars.nasa.gov/mars2020/>